



## 6 Ashendon Close Heathwood QLD

4  2  2 

Completed in only 2016 and very well maintained this home is modern, low maintenance, and one you don't want to miss out on! Crafted to the highest specifications with exceptional finishes from top to bottom, this Heathwood sanctuary will impress even the most discerning buyers.

Demonstrating an exquisite contemporary aesthetic, this stunning and sophisticated designer 4-bedroom home offers a rare family retreat in one of Heathwood's most sought-after locations.

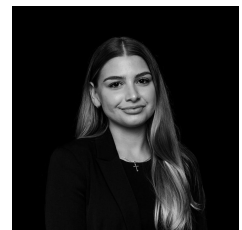
Contemporary in both design and finish, the free-flowing living and dining area open out to a sun-drenched spacious low-maintenance backyard with the perfect undercover outdoor entertaining area.

An extraordinary yet low maintenance place to call home,

**Building Size** : 181 sqm  
**Land Size** : 400 sqm  
**View** : <https://www.teamestateagents.com.au/sale/qld/southside/heathwood/residential/house/6905987>



**Cham Godakanda**  
0488988478



**Brittany Busuttil**  
0414880809



## 6 ASHENDON CLOSE, HEATHWOOD

This plan is not to scale. Areas and dimensions are approximate and therefore plan should only be used for illustrative purposes. Plants are decorative only. Floor Plan by wideangles.com.au

INT:	158 sqm
EXT:	23 sqm
<b>TOTAL:</b>	<b>181 sqm</b>