



10 Parkside Drive Springfield QLD

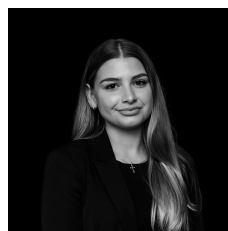
4  2  2 

This neat and spacious home is a one-of-a-kind opportunity, perfect for a family home or an investment. The home offers a generous 600-square-meter block in the heart of Springfield.

10 Parkside Drive offers four sizeable bedrooms, two bathrooms, three versatile living areas, and a spacious backyard, perfect for a family home. The large backyard adjoins to a superb outdoor entertainment area, with an additional wood-fired pizza oven providing a fabulous setting for celebrations and gatherings.

With just a stones throw away from Springfield fair shopping Centre as well as cosmopolitan village eateries, shops, boutiques, and Woodcrest State College.

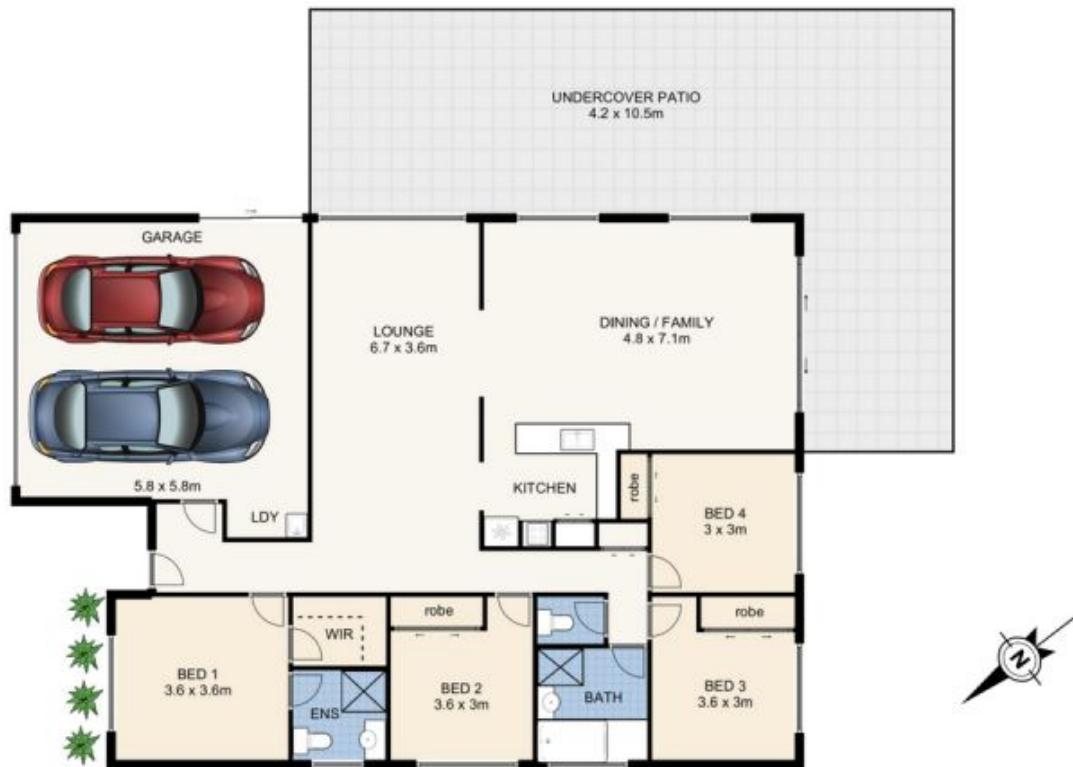
Price : \$ 635,000
Building Size : 253 sqm
Land Size : 600 sqm
View : <https://www.teamestateagents.com.au/sale/qld/ipswich-west-moreton/springfield/residential/house/7096864>



Brittany Busuttil
0414880809



Cham Godakanda
0488988478



10 PARKSIDE DRIVE, SPRINGFIELD

This plan is not to scale. Areas and dimensions are approximate and therefore plan should only be used for illustrative purposes. Plants are decorative only. Floor Plan by wideangles.com.au

INT:	180 sqm
EXT:	73 sqm
TOTAL:	253 sqm